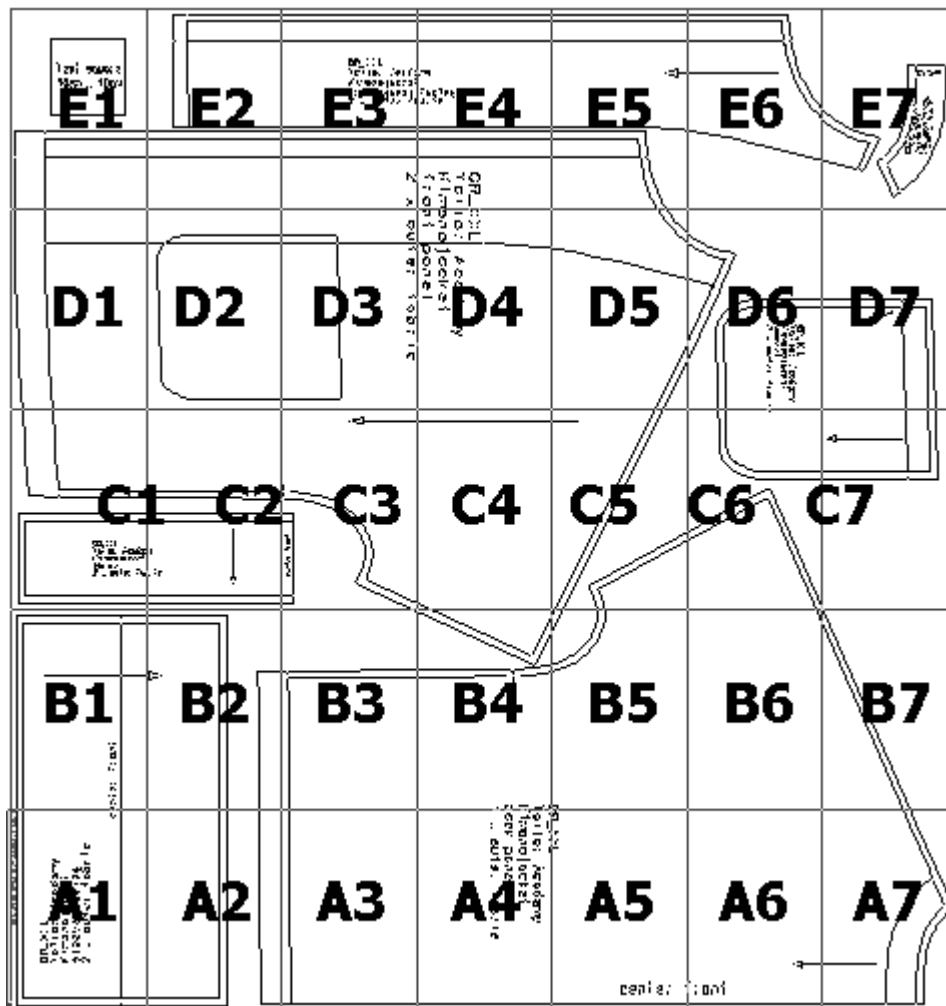


# Printing overview

Important: Please print the test page to ensure your patterns are printed in the correct size. The test page and printing instructions are included in the downloads folder.



ce

ci rqb f jef no x z  
g i c f eee l s  
f ket ionoi K  
Academy joliat T  
GR\_XL



( A,03) : Kimono jacket.mdl (..\Tailor Academy\_new\)

ailor Academy

kimono jacket

back panel

X outer fabric

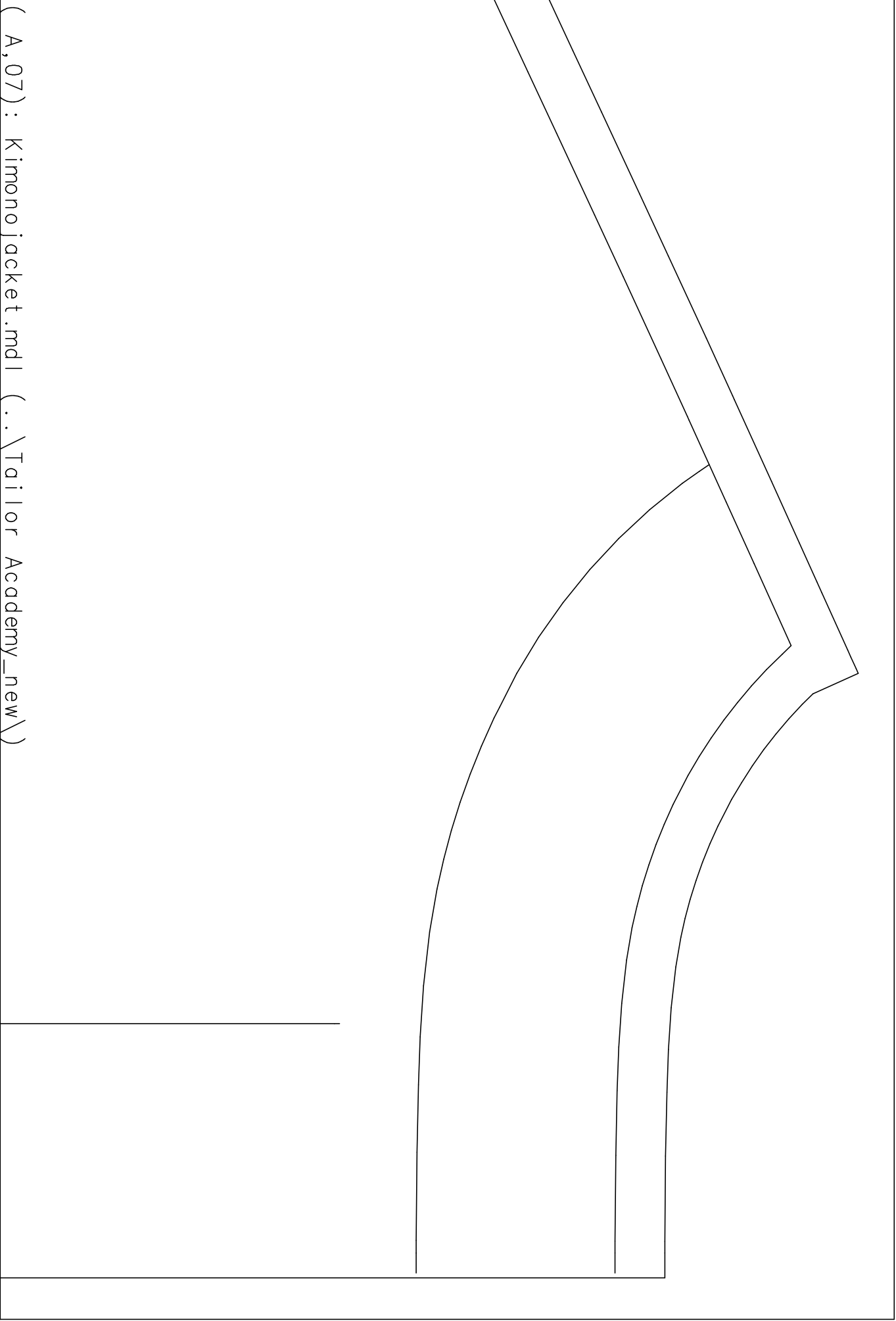
(A,04): Kimonojacket.mdl (..\Tailor Academy\_new\)

center

( A,06) : Kimono jacket.mdl (..\Tailor Academy\_new\)



front



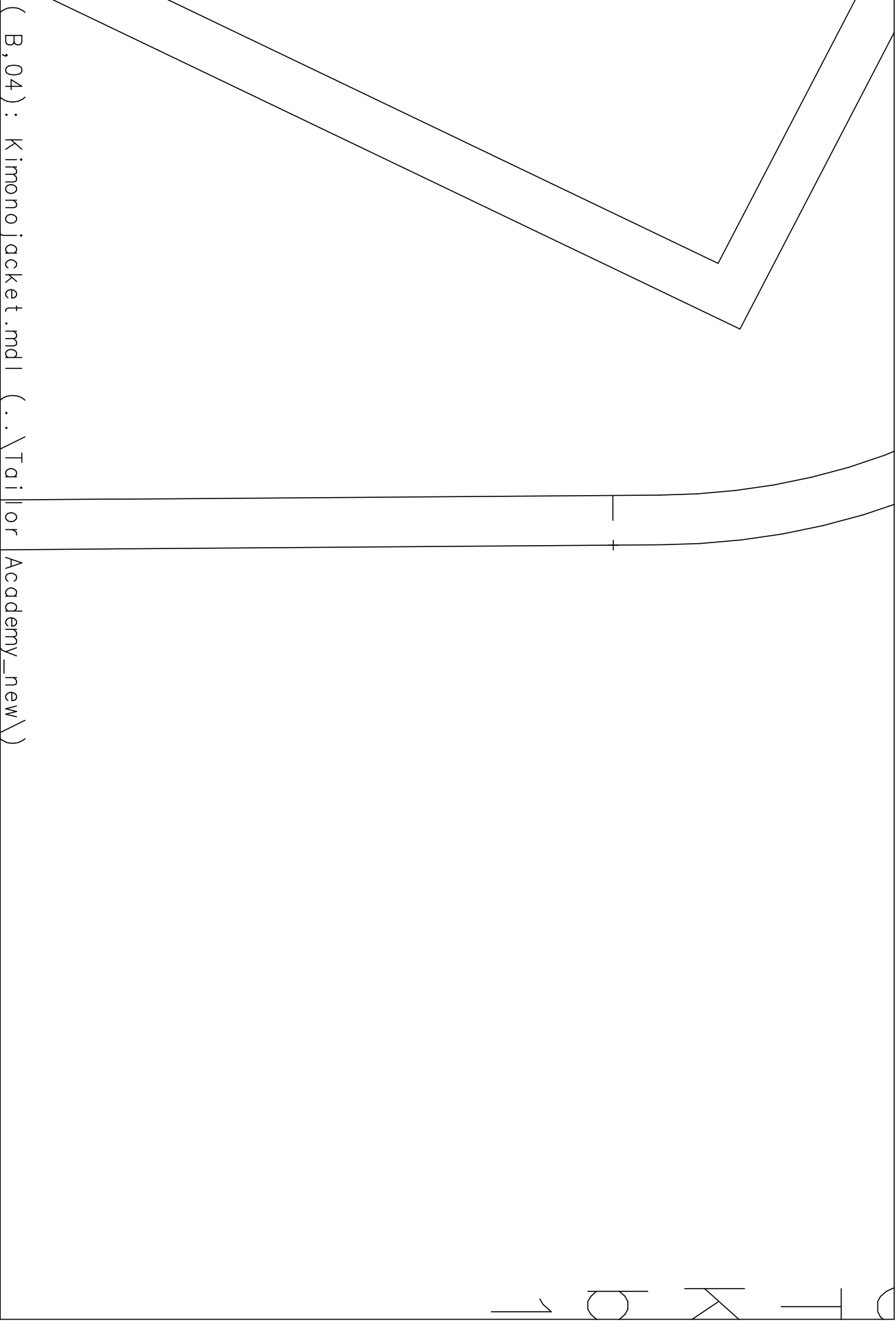
( A,07 ): Kimono jacket.mdl (..\Tailor Academy\_new\)



((B,01): Kimono jacket.mdl (..\Tailor Academy\_new\))

(B, 02): Kimono jacket.mdl (..\Tailor Academy\_new\)

( B,03) : Kimono jacket.mdl (..\Tailor Academy_new\)		



( B,04 ) : Kimono jacket.mdl ( ..\Tailor Academy\_new\ )

(B, 05) : Kimono jacket.mdl (..\Tailor Academy\_new\)



( B,06) : Kimono jacket.mdl (..\Tailor Academy\_new\)

( B,07) : ~~Kimono jacket.mdl~~ (..\Tailor Academy\_new\)

( C,01) : Kimonojacket.mdl (..\Tailor Academy\_new\)

GR\_XL  
Tailor Academ  
Kimonojacket  
collar  
2 x outer fab



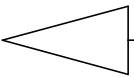
two returns



(C,02): Kimono jacket.mdl (..\Tailor Academy\_new\)

ny

oric



( C,03) : Kimono jacket.mdl

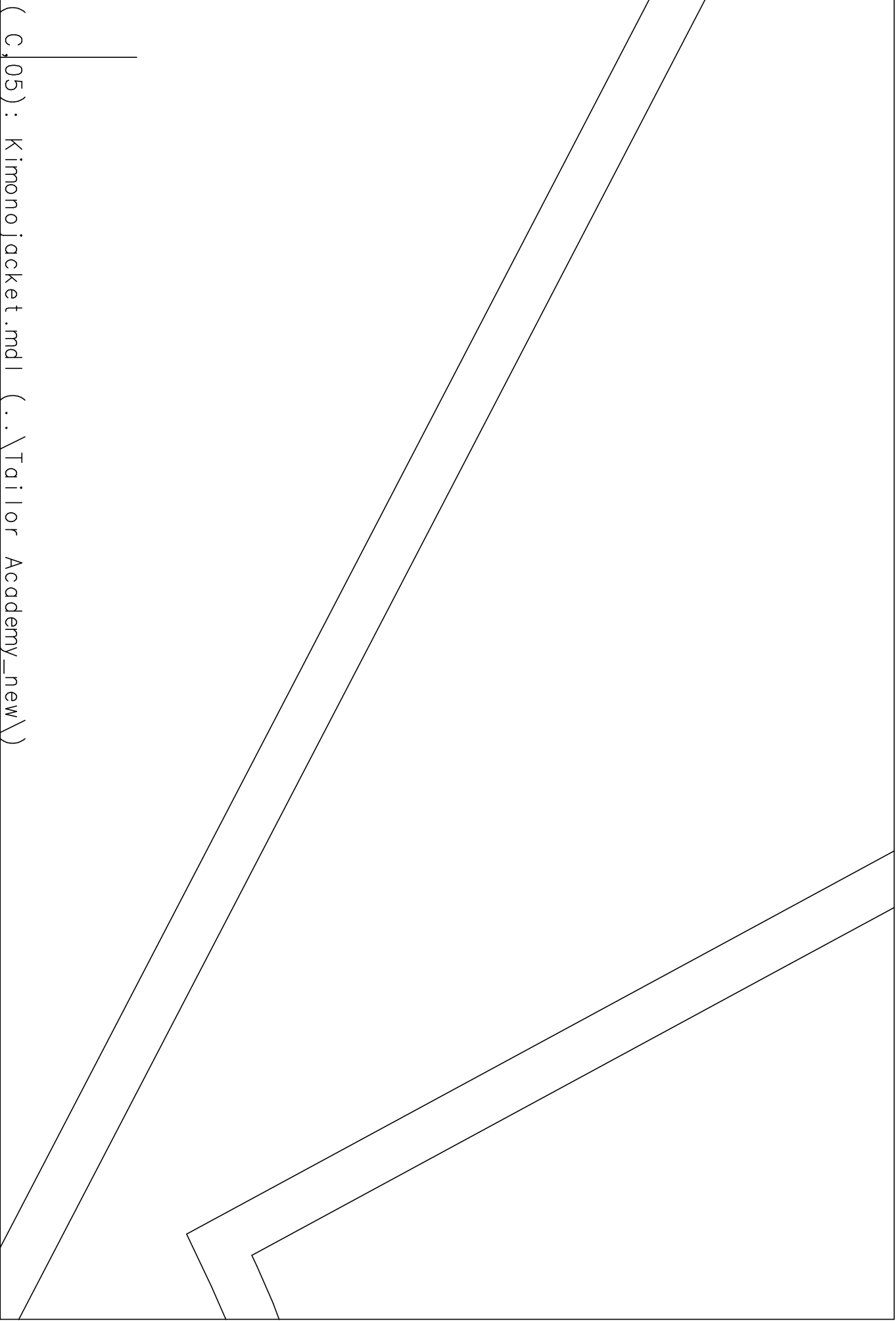
(..\Tailor Academy\_new\

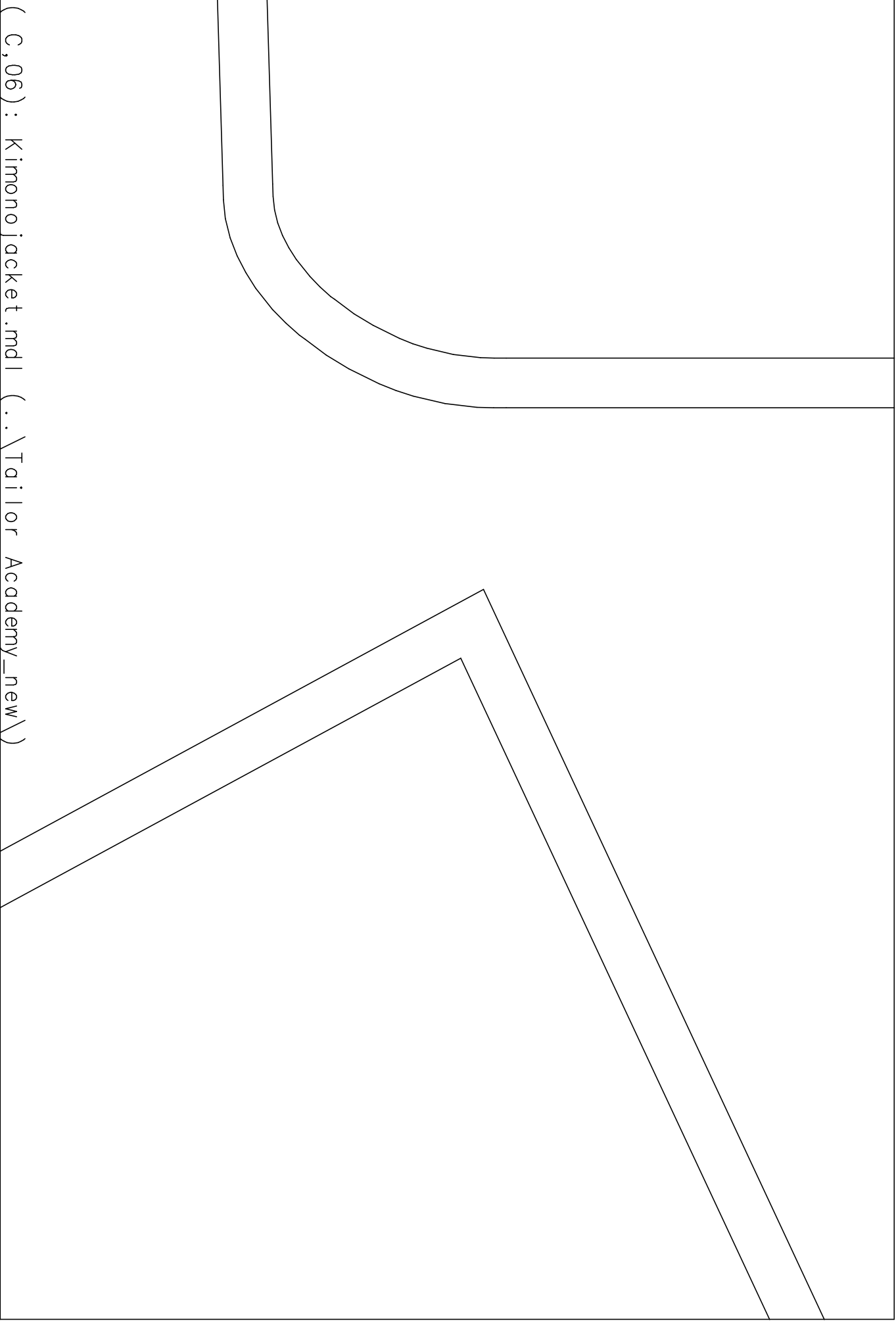
2110111021102



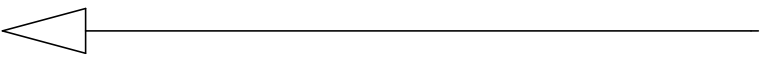


( C,05) : Kimono jacket.mdl (..\Tailor Academy\_new\)





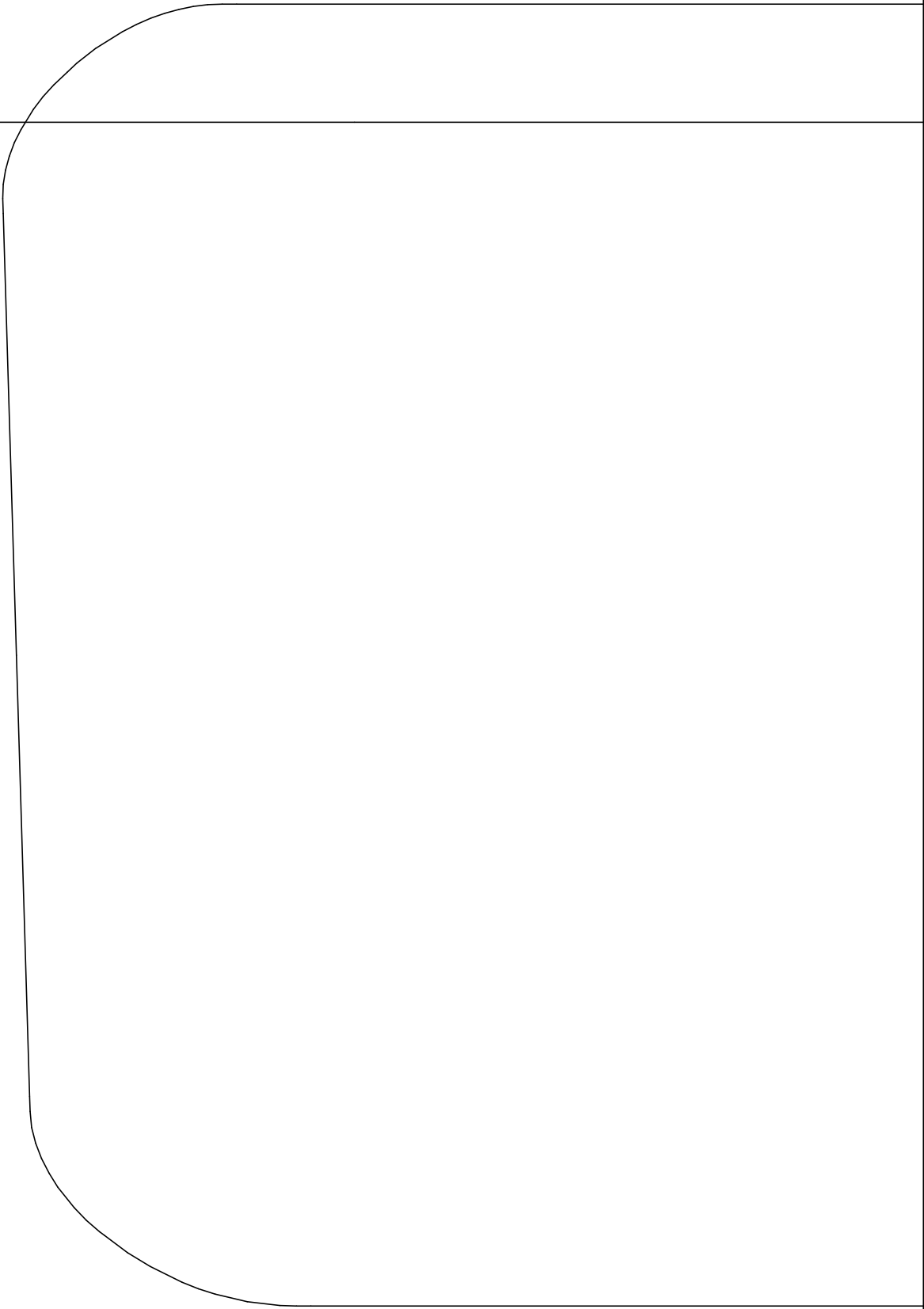
( C,06) : Kimono jacket.mdl (..\Tailor Academy\_new\)



( C,07) : Kimono jacket.mdl (..\Tailor Academy\_new\)

( D,01) : Kimono jacket.mdl (..\Tailor Academy_new\)			

( D,02) : Kimono jacket.mdl (..\Tailor Academy\_new\)





# ORDER FORM

( D,03) : Kimono jacket.mdl (..\Tailor Academy\_new\)

XL

ior

nono

nt

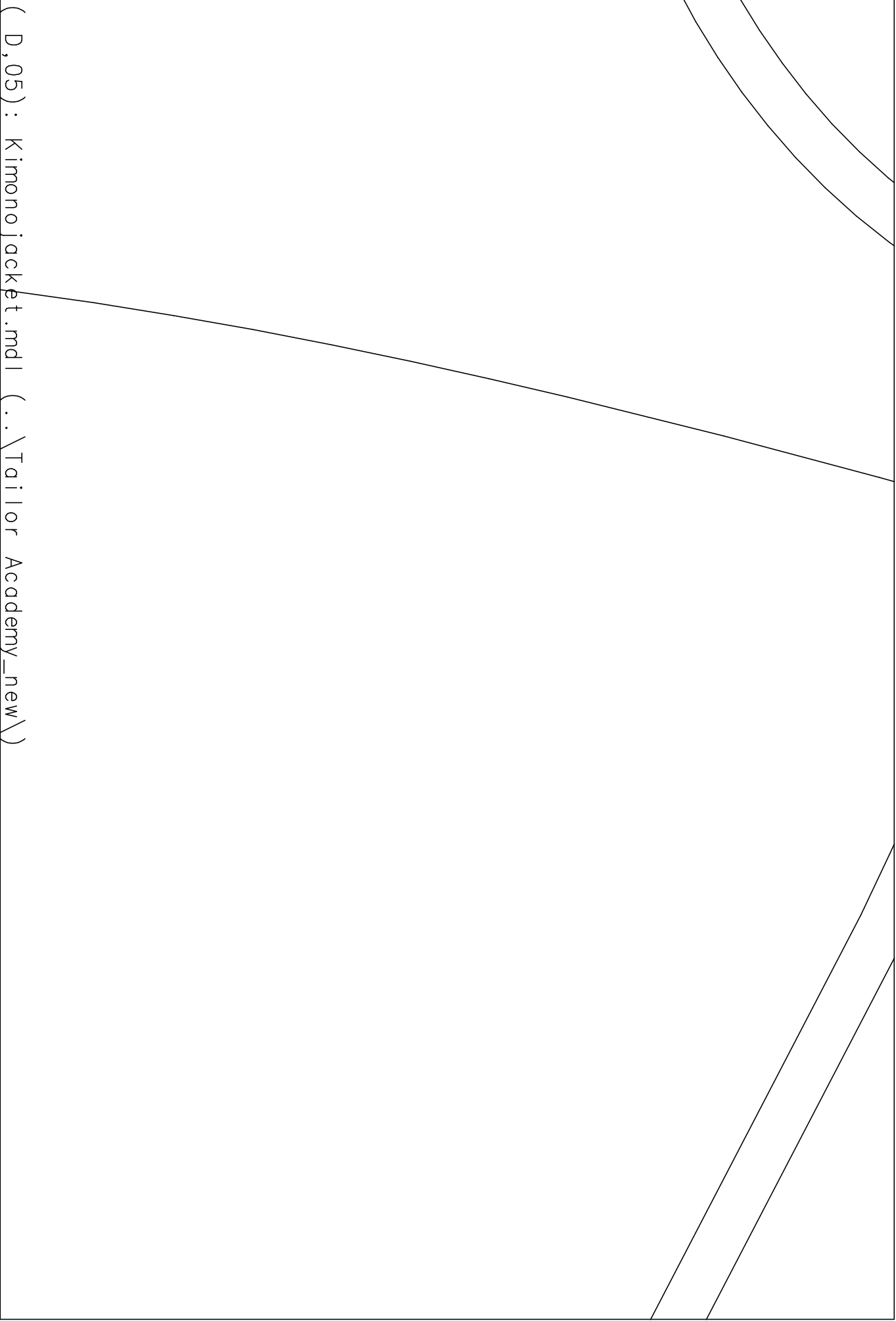
Academy

♦ jacket

panet

(D,04): Kimono jacket.mdl (..\Tailor Academy\_new\)

♦



( D,05) : Kimono jacket.mdl (..\Tailor Academy\_new\)

GR\_XL  
Tailor Academy  
Kimono jacket  
pocket  
2 x outer fabric

( D,06) : Kimono jacket.mdl (..\Tailor Academy\_new\)

( D,07) : Kimono jacket.mdl (..\Tailor Academy\_new\)

front

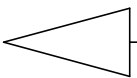
Test square  
10cm x 10cm

((E,02): Kimono jacket.mdl (..\Tailor Academy\_new\))

			<div data-bbox="774 607 1497 1070"><div>GR_XL</div><div>Tailor Academy</div><div>Kimono jacket</div><div>front panel</div><div>2 x outer fabric</div></div>
			<div data-bbox="1417 1816 1497 2116"><div></div><div></div></div>



((E,04): Kimono jacket.mdl (C:\Tailor Academy\_new\))



(E,05): Kimono jacket.mdl (..\Tailor Academy\_new\)

